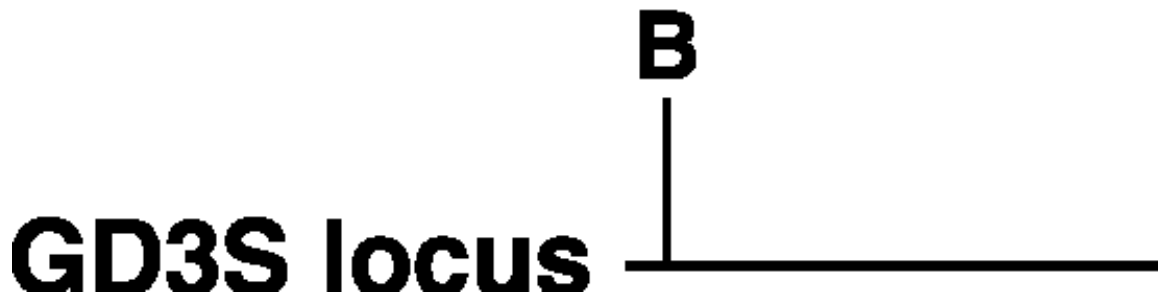


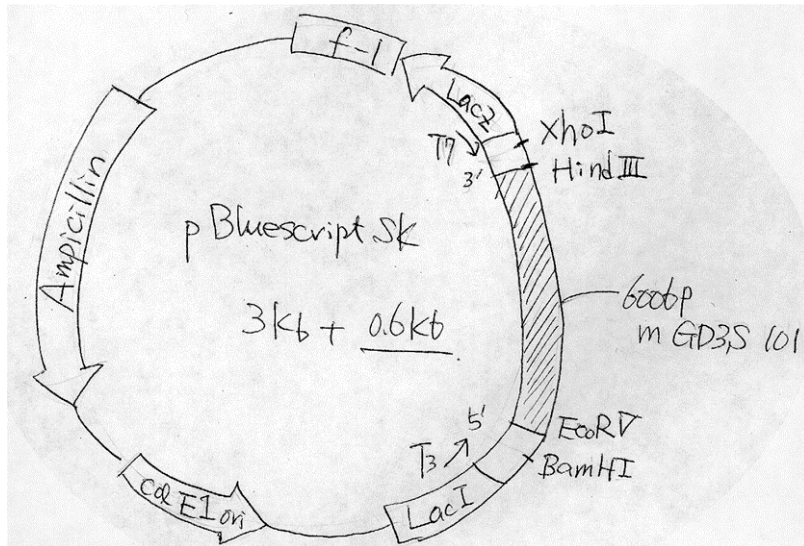
# GD3S

Targeted Gene:



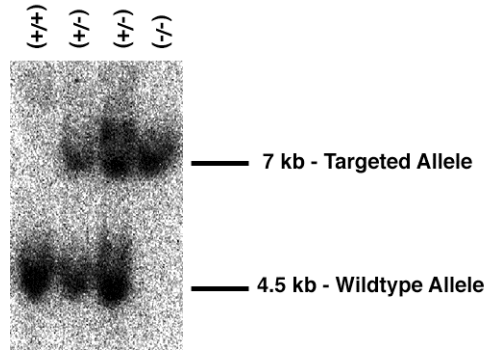
Probe:

Plasmid: pBGD3S probe (BOX 1)

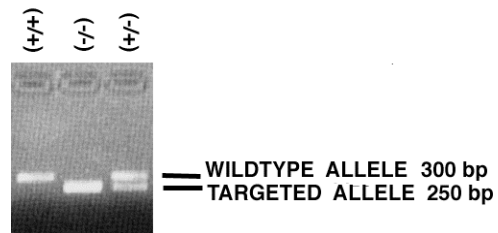


Cut out 600 bp probe by EcoRV and Hind III (BOX 2)

## GD3S Southern (HIND III DIGESTION)



## GD3S PCR Assay



Wildtype Primers--9692, 9694  
Targeted Primers--9694, RLP290

### **PRIMER SEQUENCES**

GD3S 9692 - 5' CAC AGT TAC ATC TAC ATG CCT 3'  
GD3S 9694 - 5' GCA AGA CGT TGT CAT AGT AGT 3'  
RLP290(Neo) - 5' TCG CCT TCT TGA CGA GTT CTT CTG AG 3'