

GENOTYPING BY PCR PROTOCOL

MUTANT MOUSE REGIONAL RESOURCE CENTER: UC DAVIS

mmrrc@ucdavis.edu
530-754-MMRRC

NAME OF PCR: STOCK Tg(RALGAPA1-cre/ERT2, GFP)1Jlr MMRRC: 037152-UCD

Protocol:

Reagent/Constituent	Volume (µL)
Water	11.275
10x Buffer	2.5
MgCl ₂ (stock concentration is 25mM)	1.7
Betaine (stock concentration is 5M) <i>Optional</i>	6.5
dNTPs (stock concentration is 10mM)	0.5
DMSO <i>Optional</i>	0.325
Primer 1. (stock concentration is 20µM)	0.5
Primer 2. (stock concentration is 20µM)	0.5
Taq Polymerase 5Units/µL	0.2
DNA (example) extracted w/ "Qiagen DNeasy columns or other similar silica based kits"	1.0
TOTAL VOLUME OF REACTION:	25.000 µL

Comments on protocol:

- Protocol may work with other DNA extraction methods.
- Use Touch-Down cycling protocol-first 10 cycles anneal at 65°C decreasing in temperature by 1.0°C; next 30 cycles anneal at 55°C.
- Betaine and DMSO have been standardized due to high GC content. Protocol may be tested without. Also, may adjust

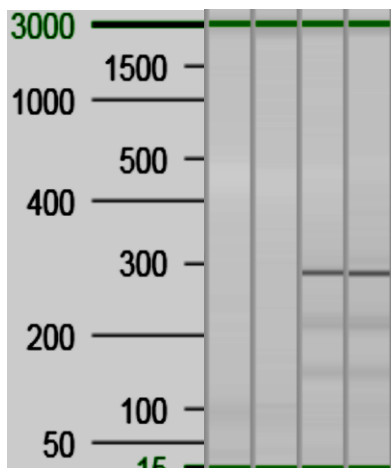
Strategy:

Steps	Temp (°C)	Time (m:ss)	# of Cycles
1. Initiation/Melting HOT START? <input type="checkbox"/>	94	5:00	1
2. Denaturation	94	0:15	
3. Annealing steps 2-3-4 cycle in sequence	65 to 55 (↓1°C/cycle)	0:30	40x
4. Elongation	72	0:40	
5. Amplification	72	5:00	1
6. Finish	15	∞	n/a

Primers:

Electrophoresis Protocol:

Name	Nucleotide Sequence (5' - 3')	Argarose: 1.5%	V: 90
1. 37152-F4	AATTGATCACTCTCTTTTCGCACC	Estimated Running Time: 90 min.	
2. 37152-R2	ACTACATTGGAAATATCCTCCCCTGC	Primer Combination	Band (bp)
		1 and 2	280
			Genotype
			TG



Lanes
1) No Template
2) Wildtype
3) 37152
4) 37152